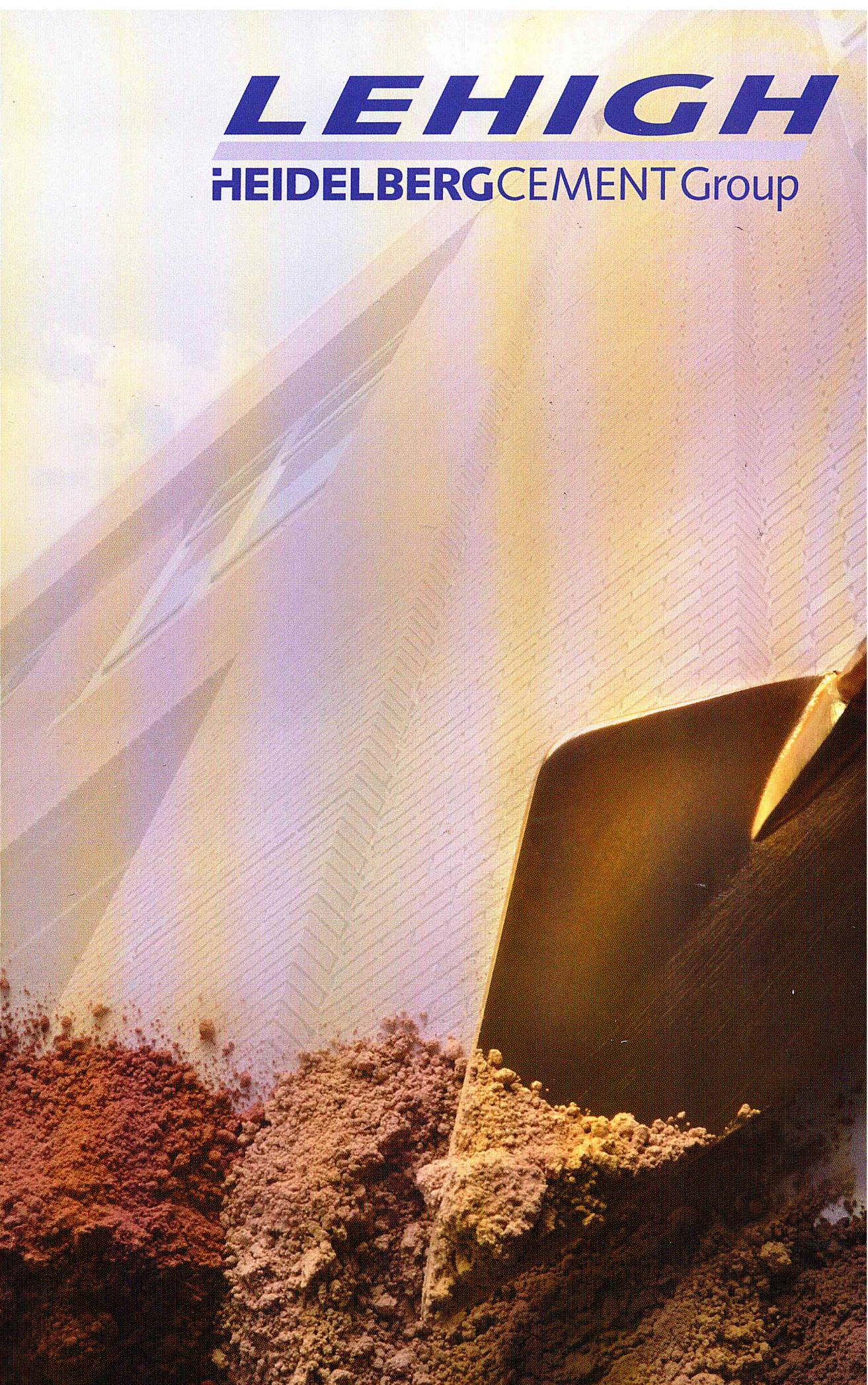


*Architectural Series*

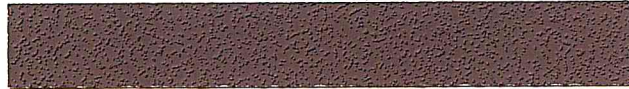
Custom Color Cements

**LEHIGH**  
**HEIDELBERG CEMENT Group**





1125



1164



1214



1221



1224



1293



1296



1304



1424



1455



1494



1552



1604



1725



1753



1803



1836



3303



3335



3336



3432



3504



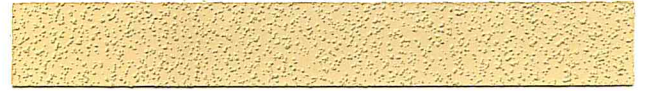
3563



3615



3626



4206



4326



4337



4465

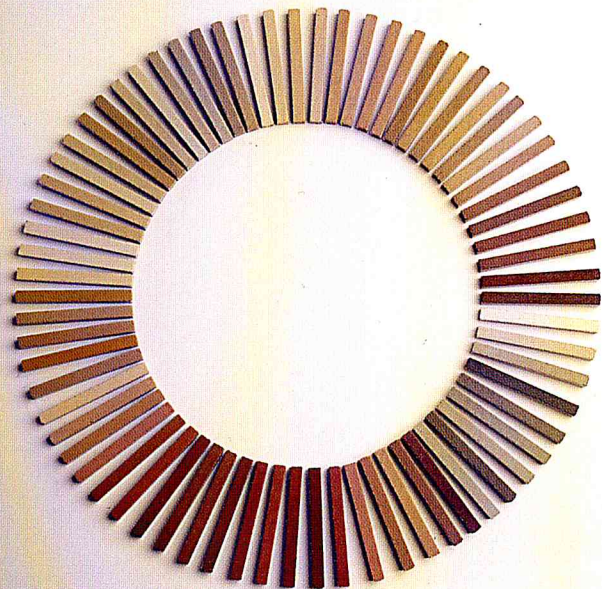


4496

THE COLORS SHOWN ARE REPRESENTATIVE ONLY AND WILL VARY DEPENDING ON JOB-SITE CONDITIONS.

# Color Selection

Lehigh Custom Color Cement is specifically formulated and quality controlled for use as mortar in masonry unit construction. The Architectural Line of colors illustrated in this card reflect these applications and are designed to simulate mortar finished under optimal conditions. Upon request Lehigh will provide through our dealers a sample of pre-blended cement to be used in the erection of a sample panel for color evaluation and approval.



## Further Assistance

in designing your next project with **Lehigh Custom Color Cement** can be found at our website: [www.lehighcement.com](http://www.lehighcement.com)

Under **Products and Services** • Order an individual color strip manufactured with a neutral sand, for your specific project.

- Locate the nearest sales office, Lehigh Sales Representatives and Lehigh Cement Dealers.
- View past projects and product applications.

**To order an individual color strip go to: [www.lehighcement.com](http://www.lehighcement.com) or fax us at: 1-888-579-5069**

While this card and actual color strips are useful in the preliminary phases of project planning, Lehigh does not recommend using this card and/or strips for final color approval. The best indication of final color is a jobsite sample panel constructed utilizing a qualified contractor and the actual jobsite materials, techniques, and conditions. Lehigh makes no warranty as to the color, appearance or consistency of the finished mortar. Lehigh Custom Color Cement is not designed for use as stucco.



4505



4534



4543



4653



4704



5025



5123



5131



5151



5191



5206



5326



5385



5454



5555



5752



5791



5872



6283



6303



6332



6401



6421



6613



6701



6853



7324



7423



7504



7526



7707



8005



8024



8204



8336



8344



8398



8407



8522



8533

THE COLORS SHOWN ARE REPRESENTATIVE ONLY AND WILL VARY DEPENDING ON JOB-SITE CONDITIONS.

**LEHIGH**<sup>TM</sup>  
HEIDELBERGCEMENT Group

## Benefits For Our Customers

### Unmatched Consistency and Reliability —

Lehigh Custom Color Cements are carefully proportioned blends of quality materials including masonry cement, hydrated lime, Portland cement, and iron oxide pigments.

Lehigh Custom Color Cements are manufactured under controlled conditions assuring reliable performance and consistent color for every bag produced. Lehigh Cement manufactures the Architectural Line of Custom Color products specific to your jobsite requirements.

(Minimum quantities are required.)

## Satisfied Customers

In addition to specifying Lehigh Cement for your next project, the below Jobsite Reminders for best color uniformity will help ensure our customers' satisfaction with their masonry project and Lehigh Cements.

## Jobsite Reminders for Best Color Uniformity

- Sample strips are not to be used for final color selection or approval. For final color approval, always build a sample panel in accordance with project specifications.
- Follow accepted, good masonry construction practices.
- Use a clean masonry sand meeting ASTM C-144, which is consistent in color. Use sand from the same source throughout the project. Maintain the same mix proportions for each batch.
- Tool all joints when they reach the same degree of hardness.
- Protect all jobsite materials from weather by covering with water resistant materials.
- Never re-temper colored mortar. Additional water will affect final color.
- The use of admixtures is not recommended and may cause variations in the final color.
- Mix all materials 5 minutes in a mechanical mixer. Hand mixing will not fully develop the final color.

*Variations in jobsite mix proportions, temperature, moisture, sand, tooling and cleanup can cause inconsistencies in the color of the finished mortar.*

## Cleaning

Walls should be cleaned with a mild detergent or proprietary cleaner. Cleaning materials shall be in accordance with the manufacturer's recommendations. Test all cleaning materials on a sample panel before use. Do not clean colored mortar joints with acid as it will loosen pigments and expose sand grains. Sample panels require 7 to 21 days for complete hydration to occur depending on weather and site conditions. Do not clean panel for a minimum of 7 days after construction.

### Jobsite Reminders



## MORTAR PROPORTIONS, ASTM C270

Mortar Type	Lehigh Portland Cement	Lehigh Masonry Cement	Hydrated Lime	Sand ASTM C144
M	1-94 lb. bag	—	1/4 bag	Not less than 2.25 and not more than 3 times the sum of the separate volumes of cementitious materials
S	1-94 lb. bag	—	1/2 bag	
N	1-94 lb. bag	—	1 bag	
M	—	1 80 lb. bag	—	
S	—	1-75 lb. bag	—	
N	—	1-70 lb. bag	—	

### Specifications for Mortar

#### Lehigh Custom Colored Masonry Cements

Meet the Property Requirements specified in Table 1 of ASTM C91 for Type N, S, and M mortar.

Type N	Type S	Type M
70 lbs.	75 lbs.	80 lbs.

#### Lehigh Custom Colored Portland & Lime Blends

Are pre-blended containing Type 1 Portland cement meeting the requirements of the ASTM C150, and Type S hydrated lime conforming to ASTM C207. Lehigh Portland & Lime Blends meet the Proportion Requirements in Table 1 of ASTM C270 for Types N, S, and M mortar.

Type N	Type S	Type M
72 lbs.	76 lbs.	83 lbs.

#### Custom Color Portland Cement

Meets the standard specification for ASTM C150 for Type 1 Portland cement.

Type 1
94 lbs.

### GUIDE FOR SELECTION OF MORTAR TYPE

Application	Cement Type
Exterior, Above Grade Load Bearing	N or S
Non-Load Bearing	N
Interior Load Bearing	N or S
Non-Load Bearing	N
Below Grade	M

## Compressive Strength Testing

ASTM C270 is a laboratory specification utilizing a prescribed volume of water to evaluate the compressive strength of mortars. ASTM C780 is a field specification and should be utilized to evaluate mortars mixed in the field. Compressive strength results of field mortars utilizing ASTM C780 cannot be compared to the listed minimum compressive strength values given in Table 1 of ASTM C270.

## Availability and Service

Lehigh manufactures a wide range of Custom Color Cements to meet all of your needs. All custom orders, which include the Architectural Line, will require a lead time for production. Ask your local Lehigh Cement dealer for details. They can show you the entire line, including our Standard Colors, with some selections available in stock for immediate pick-up.



**ORDER  
A  
STRIP**

LEHIGH CEMENT COMPANY  
66 Demarest Road  
Sparta, NJ 07871  
Phone: 800-962-5490  
Fax: 1-888-579-5069  
and  
204 Windsor Ave.  
Hamburg, PA 19526  
Phone: 1-800-541-8020  
[www.lehighcement.com](http://www.lehighcement.com)

The Lehigh Dealer in your area: